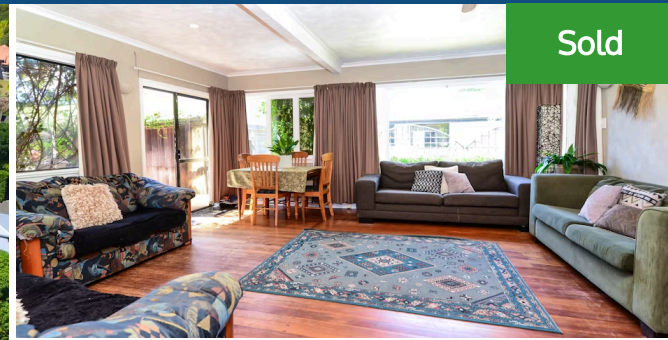
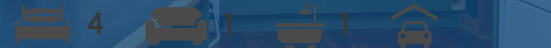




📍 629 Grey Street, Hamilton East



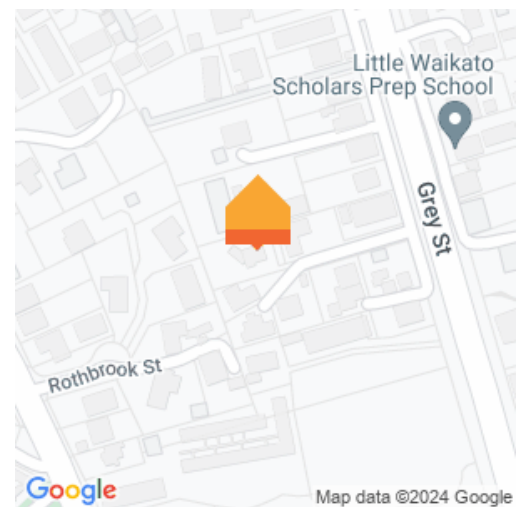
Sold



Vendors say "Sell it away". . . Welcome to 629 Grey Street. . . right between Hamilton East and Claudelands. A Flat, easily developed section of a complete 1367m2 (split into two crossleases - same owner). Would you believe it? But this was done in the 1960's - so the great news is you can build onto the spare section here. Ask Lisa for a copy of the two titles. The back section is ready for you to build (or not). The owners had the foresight to buy here 12 years ago, and now have new plans. . . so maybe its time for you to build that central city dream home for yourself. If you've just wanted a massive section just minutes to the CBD - then plan the tennis court, and the pool. The 1940's home is spacious and has beautiful native timber floors, Insulated walls and ceiling, gas central heating and hot water, theres 3 bedrooms plus an office, double garage, then on the spare section there's a little hidden gem (a two storied loft cottage). You'll be surprised at how private and quiet it is here - a hidden oasis. Zoned for Hamilton East Primary, Peachgrove Intermediate and Hamilton Girls/Boys High - it doesn't get more desirable than that. The current tenants have loved it here so much - they've been here 10 years (and happy to stay). You'll find 629 Grey Street at the top of the dip, on the city side. Make a bee-line to here, this will be snapped up. Call Lisa Sigley on 021722281 to view and check out your options. [www.lisasigley.com](http://www.lisasigley.com)

Land area 1367 m<sup>2</sup>

Floor size 146 m<sup>2</sup>



HCC Rates \$2295 & \$851 - WRC Rates \$381 & \$175



Lisa Sigley

📞 07 838 3800

📱 021 722 281

✉ [lisa.sigley@lugtons.co.nz](mailto:lisa.sigley@lugtons.co.nz)

🌐 <https://www.lisasigley.com/>