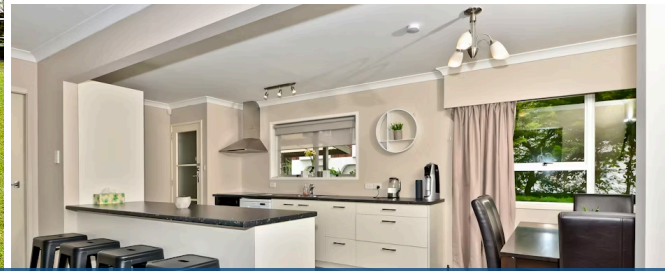




9 Salmond Place, Dinsdale



Sold



4 1 1

In an elevated cul-de-sac with district views, this family home offers all the benefits of a west-side location. Recreational parks and reserves are close, commuting to the city, hospital and west coast destinations is easy, Dinsdale shops are handy and is in zone for Aberdeen Primary School. This split stone home that has been tastefully remodelled in recent years and has good insulation, invites really good family living with its spacious open plan kitchen dining living area, four bedrooms, spacious grounds and secure backyard. Bright, warm open concept living is enhanced by a modern, work-friendly kitchen and sunny deck with views to Mt Te Aroha. A kitchen garden is located at the back door and there is a double garage and parking on site. A Smart Vent system and energy-saving gas heater deliver comfort and excellent air quality in a home that is very liveable and offers potential to add value. Living is orientated for the sun and the home is alarmed for peace of mind. Young children and pets can run about safely. Salmond Place lies in the picturesque Dinsdale hills in a family-friendly neighbourhood that is walking distance from Till's Lookout and Taitua Arboretum, a tranquil green space abundant with trees, pastures, a woodland garden and walking trails. Bremworth Park's sports fields are nearby. This property offers affordable family living and appeal across all strata of the buying and investor markets.

| | |
|----------------|--------------------|
| Land area | 669 m ² |
| Floor size | 152 m ² |
| Rateable value | \$430,000 |
| Rates | \$2,628.00 |



Kerry Hopper

07 838 5870

021 984 173

kerry.hopper@lugtons.co.nz

<http://kerryhopper.nz/>