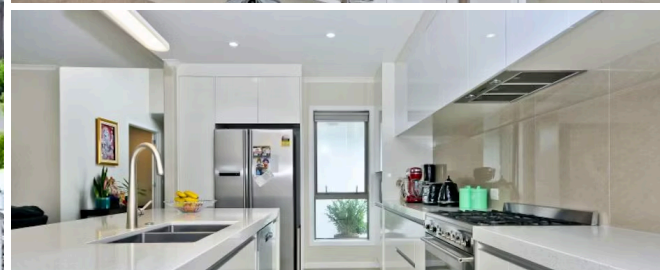




Sold



9 Helenslee Court, Flagstaff

Positioned within a cul de sac and loaded with content and many features, this home certainly offers options catering for either large or extended families or is perfect for teenagers being designed with two wings. Offering six bedrooms, or five plus large office (master with sumptuous ensuite and walk in robe), a further two bathrooms, separate laundry, open plan informal living and dining area, separate formal lounge, gourmet kitchen including stone bench tops plus walk in pantry surrounded with quality appliances. Triple internal access garaging completes the package. The indoor outdoor flow is seamless to the north facing back yard which will provide endless hours of fun whilst entertaining,

Viewing is essential to avoid disappointment. Do you have a property to sell and would like to know what it may be worth?

Contact Ken or Diana today for your FREE no obligation 20 minute property assessment. "Opening your door to more buyers."



Land area	689 m ²
Rateable value	\$770,000
Rates	\$3,642.17

