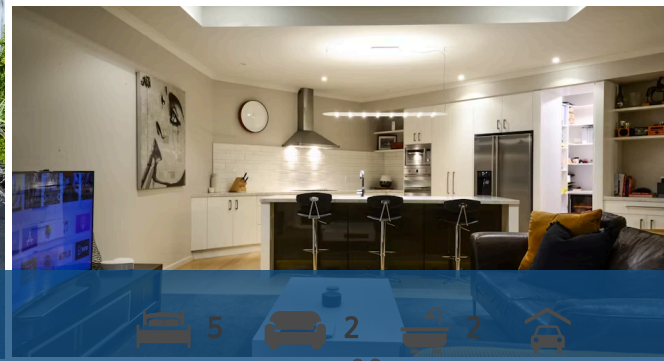
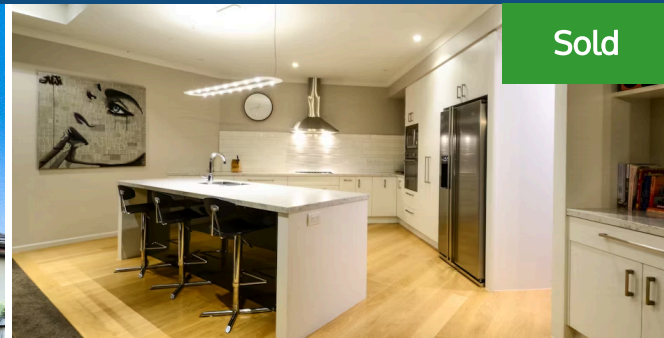




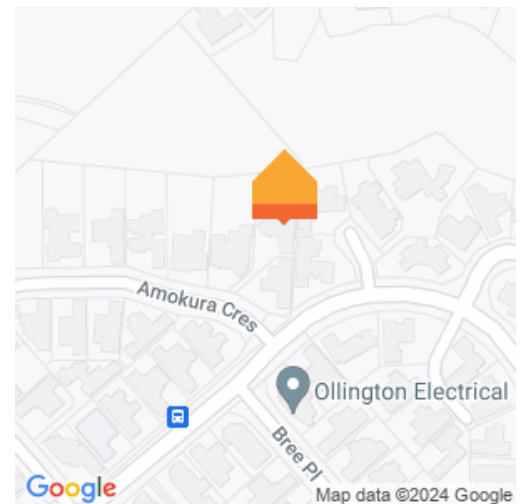
35 Amokura Crescent, Flagstaff



1

The hunt for spacious family living is over - this Flagstaff home has it all. Built in 2013 by Downey Designer Homes, extra attention has been poured into creating a quality environment with a sanctuary-like vibe. Sculpted into an expansive 1279m² parcel of land is this sun-loving star of a home delivering 302sqm of first-class living enhanced by a north-facing aspect and gully outlook. Designed for optimum enjoyment, the double glazed interiors come with all the bells and whistles. And with a fabulous outdoor arena, you can holiday at home this summer. There is smooth flow to alfresco areas and huge scope for entertaining. Portico and swimming pool, set in the massive deck, overlook the gully. The views can't be built out and all living zones, as well as the master suite, seamlessly engage with nature. So much indoor-outdoor space makes it an easy home to relax with friends or come together for family time. The portico is effectively a third living area, working in complement with the all-embracing family living hub adjoining the separate lounge. Keen entertainers will fall in love with the kitchen's stone-look style, quality appliances and functionality. The scullery, with a wine fridge, provides a discreet separate space for preparation. Stylish well-designed bathrooms are an everyday pleasure. There is a guest powder room. Five bedrooms are thoughtfully placed throughout the home. Linen storage is walk-in, the laundry is separate and garaging is triple. This immaculate family haven sits comfortably within the prestigious Amokura Crescent neighbourhood. It presents the perfect balance between activity and relaxation, and is a premium offering in a highly desired Flagstaff enclave. By appointment only call Heather on 027 239 2751.

Land area	1279 m ²
Floor size	302 m ²
Rateable value	\$1,300,000
Rates	\$5,339.73



Heather Whyte

☎ 07 855 0550

📱 027 239 2751

✉ heather.whyte@lugtons.co.nz