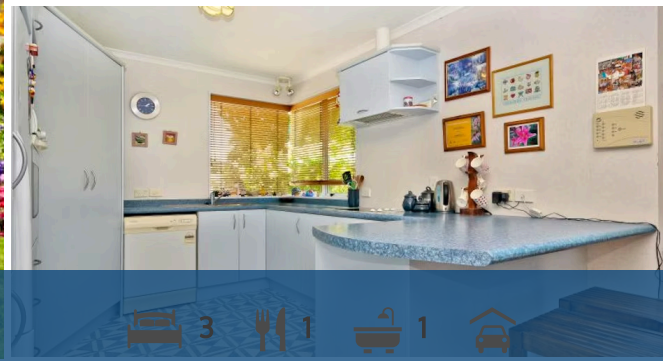




📍 23 Farnborough Drive, Nawton



Sold



Position - Price - Peace and Potential. After 18 years this much loved home comes onto the market to sell for the first time. Built of brick the home offers 3 double bedrooms, HRV system, Dishwasher, gas heating and hot water plus there's an extra toilet. Entertaining would be a breeze here with the added practicality of an Arch Gola off the living area. All nestled on a manicured lawn and garden. Only a short drive to Wintec and the Base. Properties in this location do not last long so urgency is encouraged. Call John today.

Land area	722 m <sup>2</sup>
Rateable value	\$455,000
Rates	\$2,685.30

