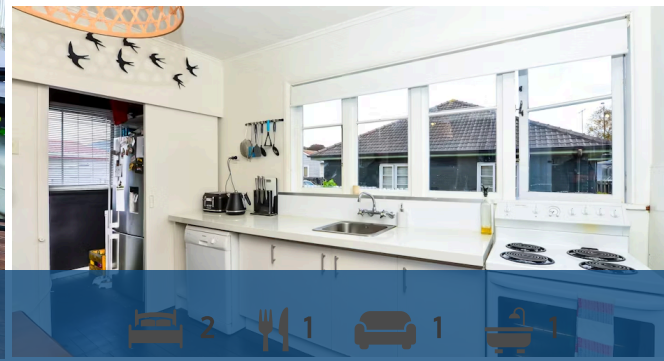
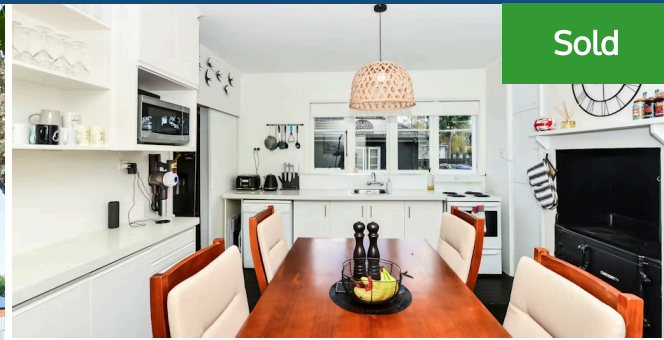




📍 116 Clarkin Road, Fairfield



This super cute 1940s-character home knows how to turn on the charm. All spruced up with new exterior paint and imbued with modern interior decor, the home is a very attractive prospect. Top and bottom insulation, and a heat pump, keep residents warm and comfortable. Everyone naturally gravitates to the kitchen and dining room for meals and banter around the table. The crisp, white kitchen has a walk-in pantry and a dishwasher, plus the aesthetics of a black coal range retained as a focal point and a reminder of the home's past. Both bedrooms are double size, served by a bathroom and separate toilet. There is also a separate laundry. Sun floods into the lounge which spills onto a generous timber deck and alfresco life. The deck area is fenced and secure, and the go-to spot for laidback outdoor living. The home is on fibre broadband, offers good off-street parking, and a very convenient location close to local shops, Chartwell mall, the river and the CBD. It is in zone for Woodstock School. Call Melissa Wilton for your appointment to view on 021 157 3459. To download the property files, please copy and paste the following link into your browser

<https://www.propertyfiles.co.nz/675850003>



Melissa Wilton

📞 07 853 0013

📱 021 157 3459

✉️ melissa.wilton@lugtons.co.nz

Floor size	89 m ²
Rateable value	\$670,000
Rates	\$2,528.00

