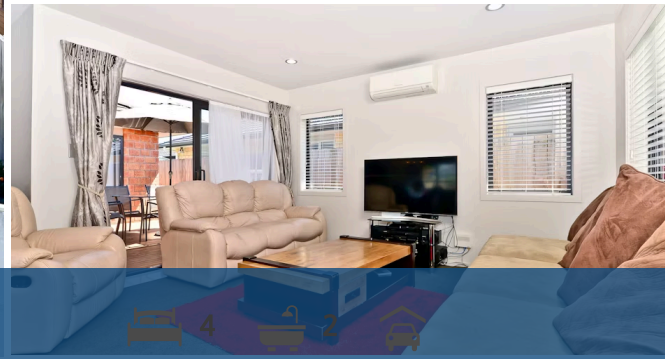




## 2 Southbrook Close, Glenview



Built in 2013 in brick and tile you will feel right at home in this well designed four bedroom home. Conveniently located close to shopping centres, schools and the Hospital and surrounded by similar style homes, this home will suit young families, professionals, investors or those wanting to downsize with a fully fenced 417sqm easy care section. Step inside to the open plan living area together with a generous well appointed kitchen including all the modern appliances you will need for todays living. Several rooms spill out to a private sunny courtyard ideal for those summer barbeques ahead. A bedroom for everyone with the master enjoying a en-suite and walk-in robe. Double internal access garage and a heat pump complete the package. Don't delay, call the team for a private viewing.

Land area	417 m <sup>2</sup>
Rateable value	\$475,000
Rates	\$2,319.58



Terry Ryan

☎ 07 855 0550

📞 021 909 978

✉ [terry.ryan@lugtons.co.nz](mailto:terry.ryan@lugtons.co.nz)

🌐 <http://www.terryryan.co.nz/>

