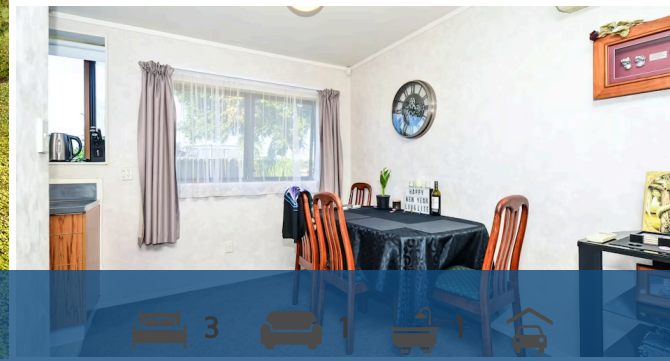




## 29 Halyard Close, Flagstaff



Sold



Families and investors will be drawn to this tidy brick home backing onto Flagstaff Park. In a popular location, the property lies in easy walking distance of Endeavour School, Flagstaff Park and shopping centre. Brick construction makes it attractive to buyers and investors desirous of a low maintenance home in a sought-after area. Families wanting to move into Flagstaff for its schools and north-city benefits will also see a great opportunity here. The home's single-level floor plan packs in three bedrooms, a full bathroom, a separate toilet and laundry, and open-plan living. A covered patio flows off the living zone and the single garage is internally accessed. The sunny section is fenced and gated, has good off-street parking, and plenty of open space for kids. The park next door is a bonus and the cul-de-sac aspect is ideal for families. Investors looking for a \$500pw return will be rewarded here. For an information pack copy and paste the below link on your web browser

<https://www.propertyfiles.co.nz/property/655640004>



Chip Humble

☎ 07 855 7510

📱 0274 752 349

✉ [chip.humble@lugtons.co.nz](mailto:chip.humble@lugtons.co.nz)

Land area	793 m <sup>2</sup>
Floor size	115 m <sup>2</sup>
Rateable value	\$580,000
Rates	\$3,310.00

