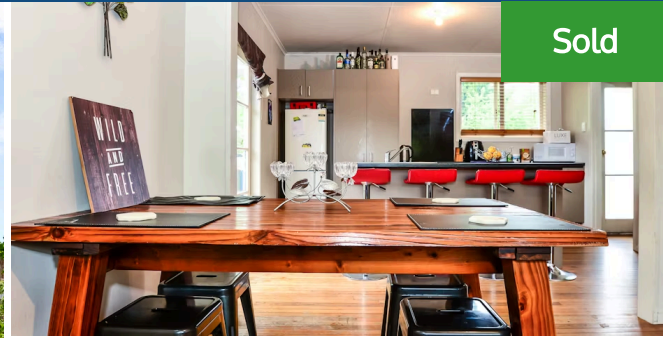




📍 82 Ranui Street, Dinsdale



Sold



Positioned in the sort after Aberdeen school zone sits this 3 bedroom weatherboard home. Sat back from the road the home sits on a 1391 m² gully site. The large entertainers deck that opens up off the updated kitchen will really come into it's own as we get further into summer. If you are looking for a home you can add your own design flare to then this could be just the home for you. There's room here to not only stamp your own mark but to add value. This is a great opportunity for first home buyers. Currently tenanted with a tenanted who'd love to stay on this could also make a great first rental property or a great addition to your rental portfolio. With easy access to the Avalon Drive bypass and routes into the city centre and South this is a great location. Call Andy today on 0275402211 to arrange a time to view and see what else this home has to offer.

🛏 3 🛋 1 🚿 1

Land area	1391 m ²
Rateable value	\$450,000
Rates	\$2,471.00



Andy Pryde - Branch Manager

☎ 07 855 0550

📞 027 540 2211

✉ andy.pryde@lugtons.co.nz

