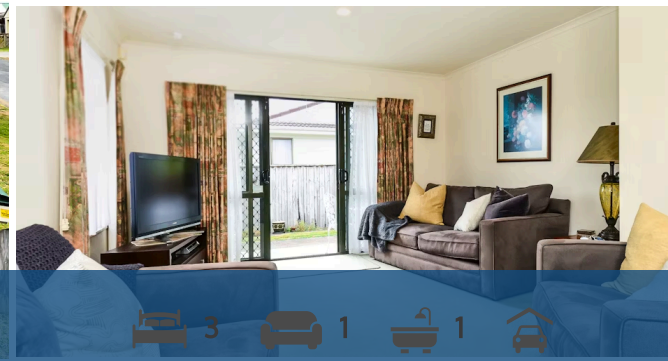




1 Whinfell Lane, Newton



Sold



3 bedrooms 1 car 1 bathroom 1 garage

Welcome to 1 Whinfell Lane. . . built in 1999, this lovely 1-owner home is great nik for your new real estate venture. Complete with 3 good sized bedrooms, double garage, semi-ensuite, nice big open plan sunny living/dining/kitchen and set on a freehold 400m2 section. Wonderful flow to the private patio. COPY AND PASTE THIS LINK FOR PROPERTY FILE: https://drive.google.com/drive/folders/1SuDHvxtTOQnfeGS_XuETGAoNaGzginsZ?usp=sharing

Land area	400 m ²
Floor size	150 m ²
Rates	\$2,501.00

With features such as gas heating, dishwasher, security screens and an alarm - you'll be all set. You've got a variety of schools close by - Newton Primary, Maeroa Intermediate and Fraser High Schools. You can wonder down to the local supermarket and mall. Fully fenced secure backyard perfect for the family or pets. Time for a change? Here's the perfect solution for you. Call Lisa Sigley on 021722281 to view. www.lisasigley.com



Lisa Sigley

07 838 3800

021 722 281

lisa.sigley@lugtons.co.nz

<https://www.lisasigley.com/>

