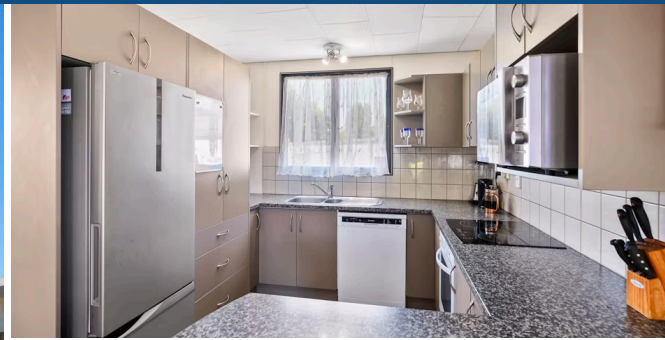




## 6 Balmerino Crescent, Pukete



3 bedrooms, 1 bathroom, 1 car, 1 garage



Nestled in the heart of Pukete, with three bedrooms, one bathroom, and an inviting open-plan layout that beckons you to call it home. The open-plan layout ensures that family time flows seamlessly from the kitchen to the living area. The deck at 6 Balmerino Cres beckons with its inviting outdoor living possibilities, promising a space where relaxation and entertainment seamlessly blend. Whether it's enjoying morning coffee as the sun rises or watching the children in the back yard, there is opportunity for you to create a nice outdoor family area. Room for a pool - yes there is on this 603m2 section. Its prime location puts you just minutes away from essential amenities. Located close to the base shopping centre, supermarkets, gym and zoned for Te Rapa Primary School. You'll have everything you need right at your fingertips. From its convenient location to its comfortable living spaces, this home is the perfect choice for those seeking entry level into Pukete.

Land area	603 m <sup>2</sup>
Floor size	93 m <sup>2</sup>
Rateable value	\$750,000
Rates	\$2,626.00



### Terry Ryan

☎ 07 855 0550  
 📱 021 909 978  
 ✉ [terry.ryan@lugtons.co.nz](mailto:terry.ryan@lugtons.co.nz)  
 🌐 <http://www.terryryan.co.nz/>



### Heather Whyte

☎ 07 855 0550  
 📱 027 239 2751  
 ✉ [heather.whyte@lugtons.co.nz](mailto:heather.whyte@lugtons.co.nz)

