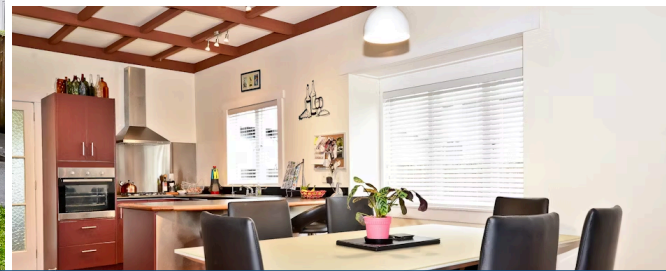




📍 50 Naylor Street, Hamilton East



What a fantastic way to start 2018 in this wonderful family home. 50 Naylor Street located in the popular suburb of Hamilton East. With all the character of the 1920's and sited on an established section this lovely bungalow is ready for a new family. Enjoying spacious light open plan living with wooden floors and refurbished kitchen with modern appliances, including gas hob and dishwasher, recently renovated bathroom, gas hot water and central heating. Period detailing is evident in the beamed ceilings and gorgeous pink Imperial plate glass, which is all original. Not often you find so much lovely character of yesteryear. There are three bedrooms, a family bathroom and recessed laundry. A sheltered veranda out front and covered deck at the rear provide bright, relaxed spaces for outdoor living. The fully fenced section with plenty of room for BBQs, kids and pets, all set behind electric gates. Double garaging with automated door and garden shed make this home complete. In great school zoning, with multiple education options. Easy walking distance to day cares, Hamilton Gardens, shops, cafes, river and university. Wairere expressway is moments away for effortless commuting.

| | |
|----------------|--------------------|
| Land area | 646 m ² |
| Floor size | 147 m ² |
| Rateable value | \$520,000 |
| Rates | \$2,901.00 |



Heather Whyte

☎ 07 855 0550

📱 027 239 2751

✉ heather.whyte@lugtons.co.nz