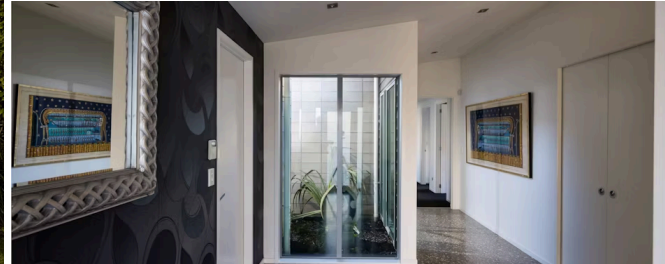




Sold



## 9 Bos Crescent, Flagstaff

This sophisticated designer home embraces contemporary elegance and exudes elegance throughout. Enjoying an elevated, north-facing position in a highly sought after area, it delivers an inspired aesthetic and is the idyllic family home. A cleverly designed floor plan that is spacious and free flowing, with a focus on connectivity, with two generous living areas and master bedroom spilling out to expansive, sun-lit decking, courtyards and superb alfresco spaces. The kitchen is socially positioned for in/outdoor living. Sleek and efficient, it features a scullery and soft-close cabinetry. Spacious, light-filled work areas make food preparation and entertaining a breeze. The open plan layout includes living and dining space that can be readily adapted to suit social occasions. There is a separate media room. Bifold windows, ranch sliders and floor-to-ceiling double glazed windows provide a subtle yet powerful way of linking the home with the outdoors, and encourage the use and appreciation of the landscaped alfresco spaces, courtyards and gardens. The single level concrete block and linea dwelling has mono pitch 2.7m ceilings, stunning polished concrete aggregate floors, gas underfloor heating throughout (garage and office exempted). A calm colour palette adorns the impeccable interiors.

 4
  2
  2
 

Land area

889 m<sup>2</sup>

Rates

\$5,454.32



Wei Sen Chow

☎ 07 838 3800

📞 027 455 4477

✉ [weisen.chow@lugtons.co.nz](mailto:weisen.chow@lugtons.co.nz)

🌐 <https://www.weisenchow.co.nz/>



Richard Hartles

☎ 07 838 3800

📞 027 3693 001

✉ [richard.hartles@lugtons.co.nz](mailto:richard.hartles@lugtons.co.nz)

🌐 <https://www.weisenchow.co.nz/>