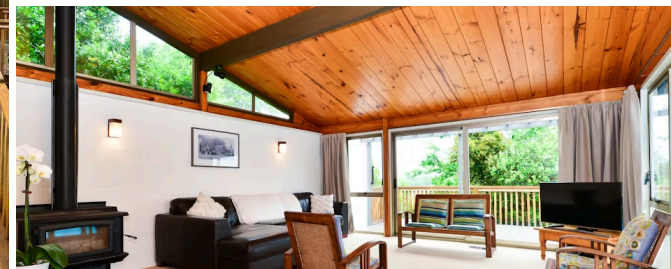




Sold



## 18 Silva Crescent, Hillcrest



Welcome to 18 Silva Crescent. . . your new shiny lifestyle begins here. Maybe you have a house to sell, and you're looking for your next move? No problem. Starting from the fantastic views above the Waikato River - towards Peacockes Road, the inground pool, the spacious 5 bedrooms, 2 bathrooms, 2 great living areas. . . and its an uber cool 1970's Lockwood home. The 3 car garaging houses all the toys, and the teenage retreat downstairs (with its own bathroom) could be your Air B&B? Work from Home? Or perfect for large families. There's so much this family have loved about living here: How the children can walk to school, Summers spent lounging around the pool, how safe they have felt, the friendly community, the warmth and sunniness. . . and how devine the wood fire is in Winter. This is a fabulous playground for a lifetime of family fun. You'll want to be the one diving into the pool during the hot Summer. LIM Report Available. Call Lisa Sigley on 021722281 to view today. [www.lisasigley.com](http://www.lisasigley.com)

Land area	1378 m <sup>2</sup>
Floor size	282 m <sup>2</sup>
Rates	\$4,585.00



**Lisa Sigley**

☎ 07 838 3800

📱 021 722 281

✉ [lisa.sigley@lugtons.co.nz](mailto:lisa.sigley@lugtons.co.nz)

🌐 <https://www.lisasigley.com/>

