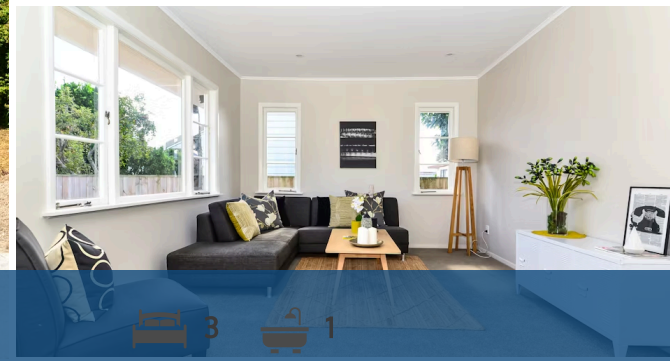
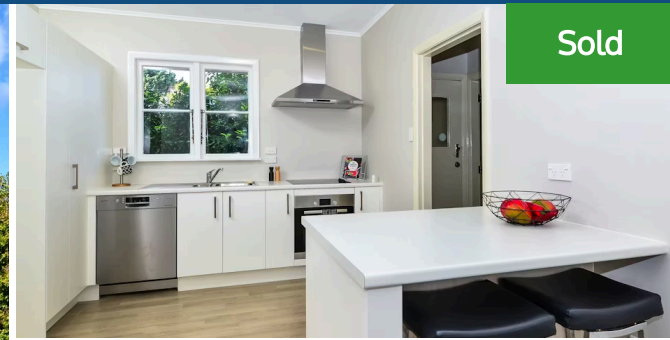




📍 26A Wall Street, Nawton



Re - Wired

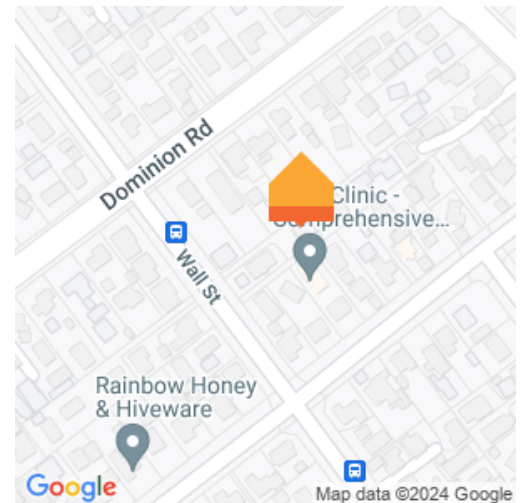
Re - Clad

Re - Roofed

Re - Decorated

Land area	533 m ²
Rateable value	\$285,000
Rates	\$1,910.35

Re - ady to move in. This relocated 3 bedroom home is ready to go. Tastefully redecorated and complete with a fresh new kitchen and floor coverings this property will make an ideal first home or investment option. Situated on its own 533m2 rear site with a new concrete driveway, fresh grass has just been laid and still room for a garage to add value and capital gain. Easy access to the Base, Wintec and Te Rapa and the convenience of a bus stop at the end of your driveway. My Vendor has priced her lovely home to sell quickly so Don't Delay, Call the Team to view this property and an info pack.



Terry Ryan

📞 07 855 0550

📱 021 909 978

✉️ terry.ryan@lugtons.co.nz

🌐 <http://www.terryryan.co.nz/>