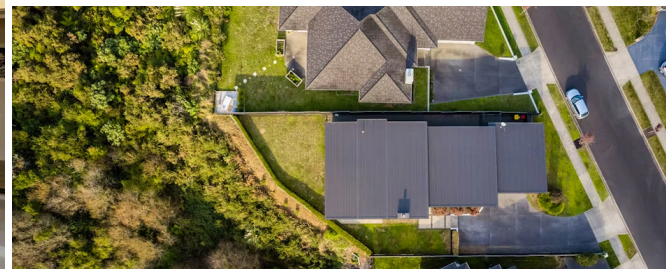




Sold



## 10 Vanquish Place, Flagstaff

Sun, setting and unimpeded gully views make your Flagstaff home an absolute pleasure to live in. Generous double glazing optimises the outlook and creates a light-filled interior with a warm, relaxed air. Draw back the large ranch sliders and enjoy life outdoors on the patio overlooking nature and the neighbourhood. Your delightfully warm home captures all-day sun and is intuitively configured for modern family living. Impeccably presented, this former kbuilt showhome has had just one careful owner in its seven-year life. Your open plan living zone stretches the full width of the home, and is the central hub for food prep, meals, lounging and family togetherness. The stylish kitchen serves even the most fastidious foodie with modern appliances, including built-in wall and convention microwave ovens, a spacious walk-in pantry and an island bench. Corner sliding doors merge the formal lounge with the outdoors and your master bedroom suite is a peaceful haven separated from the other three bedrooms. Each has a double wardrobe, apart from the master which has the requisite walk-in robe and ensuite. There is internal access double garaging and ample on-site parking. The grounds are trim-kept and contain good lawn areas for kids.



Land area

741 m<sup>2</sup>

Rates

\$4,686.29



Wei Sen Chow

07 838 3800

027 455 4477

[weisen.chow@lugtons.co.nz](mailto:weisen.chow@lugtons.co.nz)

<https://www.weisenchow.co.nz/>



Richard Hartles

07 838 3800

027 3693 001

[richard.hartles@lugtons.co.nz](mailto:richard.hartles@lugtons.co.nz)

<https://www.weisenchow.co.nz/>