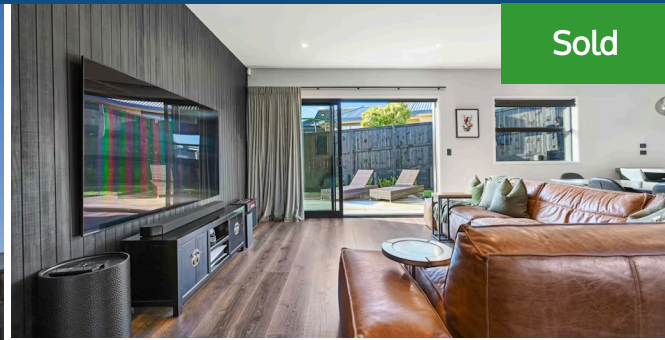
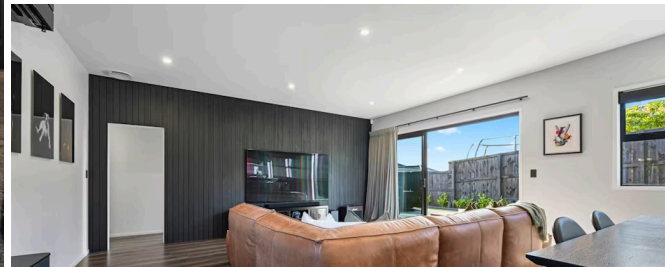




📍 22 Maanihi Drive, Rototuna



Sold



🛏 4 🚗 1 🚲 2 🏠

A remarkable home where meticulous design meets luxurious comfort. The attention to detail is apparent, with a stunning exposed aggregate concrete driveway leading to the painted white brick exterior and abodo feature walls. You'll be captivated by the impeccable internal features. The kitchen and living area exude elegance and functionality, boasting laminate flooring from the Majestic Range in Desert Oak Brushed Dark Brown. The freestanding Smeg gas oven and cooktop, along with the Fisher and Paykel dishwasher, cater to the culinary enthusiasts. A designer kitchen and cabinetry adorned with a stone waterfall benchtop, stylish splashback, and designer lighting create a truly enchanting space. And let's not forget the convenience of a scullery and the 2.7-meter stud height that enhances the sense of spaciousness. The master bedroom and ensuite are a sanctuary of style and relaxation. Prepare to be pampered with a custom-built walk-in robe and makeup station, complemented by a recessed ceiling feature and an exquisite abodo feature wall. The boutique "Buster and Punch" pendant lights exude a sense of opulence, both in the master bedroom and the fully tiled ensuite, which features a custom-made double vanity - a true testament to the homeowner's commitment to luxury.

Land area	421 m ²
Rateable value	\$1,180,000
Rates	\$4,340.00



Del Bredesen

📞 07 838 3800

📱 022 634 1066

✉ del.bredesen@lugtons.co.nz



Jay Law

📞 07 838 3800

📱 0210 837 3927

✉ jay.law@lugtons.co.nz