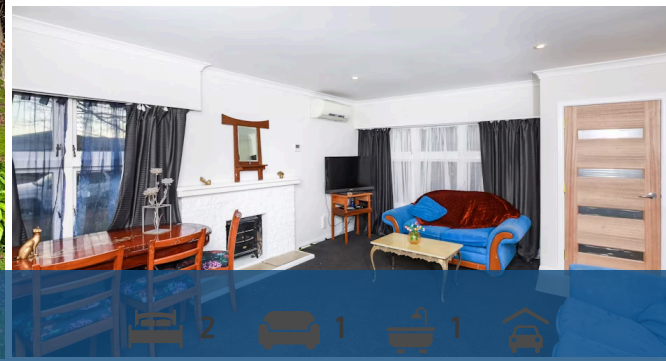




## 3A Vogel Street, Cambridge



Sold



Rejuvenated unit, centrally located in Cambridge East, perfect for retirees, busy professionals, first-home buyers or investors. A great place to call home or an ideal lock-up-and-leave opportunity. A complete makeover has transformed this north-facing two-bedroom brick & concrete tile unit, featuring a brand-new kitchen, recessed LED lighting & rewiring, new Rheem infinity gas hot water and separate water metre, ceiling & underfloor insulation. Redecorated throughout, with new wallpaper, new curtains, new floor coverings, new fixtures and fittings. A heat pump /air conditioner and ultrafast fibre connection add to the attraction. Safe and secure access, with an auto garage door opening to an enclosed carport and lovely private courtyard. Brilliant location, just 1.2km to the bustling Cambridge CBD and within minutes of local shops and services, including a new medical centre, gym, bakery, the Avantidrome, greenbelt walkway, sportsfields and Hamilton expressway. Zoned for Cambridge School (1.0km) & Cambridge High School (1.8km) and close to Cambridge Middle School (600m), St Peter's Catholic School (1.3km), Cambridge Kindergarten (800m) and the sought-after St Peter's private school (2.4km). Adjacent to the Cambridge Resthaven retirement village, which is planning major redevelopment in the area. Homes in this location rarely come to market, so don't miss this one! Contact Tony Mills call free 0800 35 34 34 (text 021 35 34 34) for more information. Viewings by appointment only.

Rates

\$2,588.00

