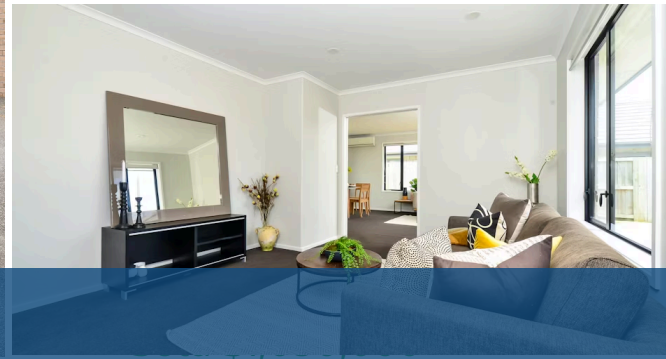




Sold



18 Oolong Court, Huntington

Tucked at the end of a cul-de-sac in Rototuna's Teafields subdivision, this modern home gives its attention to relaxed family living. Brick and tile construction, double-glazed joinery, LED lighting and a heat pump speak of easy care, comfort and performance. The single level layout maximises space by making it as functional and efficient as possible while taking into consideration outdoor living needs. A cavity slider creates a seamless divide between formal and informal spaces, and a ranch slider opens the family zone to the courtyard. The kitchen has a full set of appliances and a social vibe. Bathroom and ensuite sit on tiled floors. Three double-sized bedrooms + a Study are on offer, with good storage space. The master suite, peacefully located at the end of the house, has a walk-in robe, and the laundry is housed in the double internal access garage. The fully fenced section and private backyard are ideal for kids and pets. Close to Rototuna shops, urban amenities and commuter routes, and zoned for sought after north-city schools, the location offers superb lifestyle convenience. To download an information pack please copy and paste the following link into your browser:

<https://www.propertyfiles.co.nz/property/614720002>

A valid My Vaccine Pass will be required for Open Homes. Private inspections do not require a valid My Vaccine Pass. For more information please talk to the agent and refer to the REA Guidelines [rea.govt.nz/news/covid-19/](https://www.rea.govt.nz/news/covid-19/).

 3
  2
  2
 

Land area	422 m ²
Rateable value	\$610,000
Rates	\$3,444.62



Hope Windle

📞 07 838 3800

📱 021 0577 509

✉️ hope.windle@lugtons.co.nz