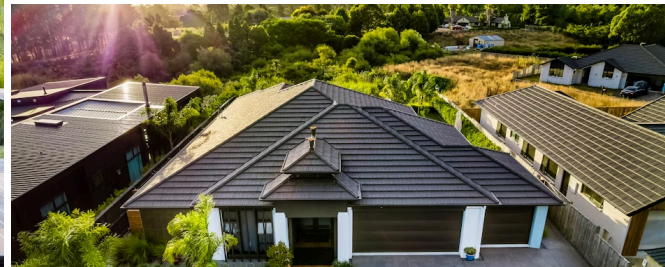




Sold



📍 56 Helen June Avenue, Flagstaff

From the carefully considered decor and functional indoor-outdoor layout of your elegant home, to the tropically themed grounds, water features and gully views, your stellar residence turns heads. It is full of modern chic, spreads itself lavishly over a 302sqm footprint and is dripping with luxurious appointments. A multi-functional open plan pavilion forms the heart of your beautiful home. Unhindered flow from the front entrance through to the rear portico creates a fantastic feeling of space, openness and natural light, while fostering a warm social environment for everyday living and effortless entertaining. The well-crafted layout seamlessly blends your family area into both portico and deck creating transitional living spaces that are seamless and perfect for hosting. The scope for relaxation is heightened by the incorporation of a media room with a home theatre system and special lighting effects courtesy of a Dimplex Prism wall fire. Movie nights will never be the same!

A designer Robin Cauldwell kitchen dishes up style and function, while keeping a keen eye on indoor and outdoor dining areas. An electronic louvred portico extends the use of your outdoor living area and the private gully outlook is hard to beat for a lush, restful backdrop.

 4
  2
  2
 

Land area

986 m²

Rates

\$6,126.85



Wei Sen Chow

📞 07 838 3800

📱 027 455 4477

✉️ weisen.chow@lugtons.co.nz

🌐 <https://www.weisenchow.co.nz/>



Richard Hartles

📞 07 838 3800

📱 027 3693 001

✉️ richard.hartles@lugtons.co.nz

🌐 <https://www.weisenchow.co.nz/>