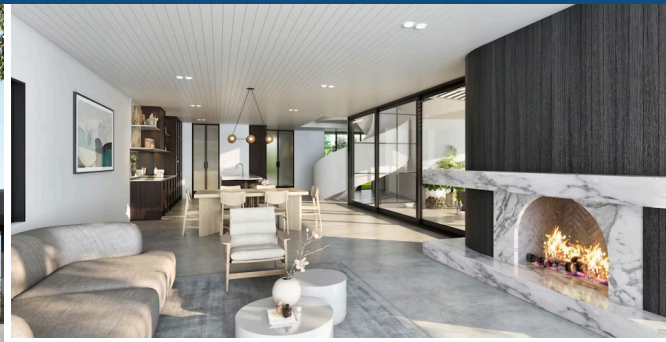




Lot 8 Sun Estate, Cambridge



A celebration in luxury living, this home garners attention for its cool, contemporary styling, clever design, meticulous detailing, and dedication to relaxed indoor-outdoor living. Designed for entertaining, and with the needs of a growing family in mind, the bespoke residence leaves nothing to chance, including location. Conceived by Mod Architecture and built by reputable AHS Group, it presents living at its best. Crafted for generations to come, the spacious 353sqm four-bedroom/three-bathroom home delivers optimum comfort and ease, and has a social indoor-outdoor focus. A chic vibe reverberates throughout. Spread over two levels linked by both a lift and stunning staircase, the interior is flooded with natural light thanks to swathes of double-glazing. Natural polished and sealed concrete floors trap the sun and emit passive heat, enhance the home's contemporary style, and take the knocks of family living. The eye-catching, custom-built walnut veneer kitchen is bookended by a media room and an open living domain. It incorporates a scullery and is a foodie's haven made for family life and entertaining. Honed marble benchtops match the honed marble fireplace in the living area, which is a focal feature. The large, ground floor bedroom steps outdoors and has easy bathroom access.

Land area 907 m²
Floor size 353 m²



Fraser Kilgour

☎ 07 838 3800
 📱 027 346 4118
 ✉ fraser.kilgour@lugtons.co.nz



Abbie Hyde

☎ 07 838 3800
 📱 027 424 5567
 ✉ abbie.hyde@lugtons.co.nz