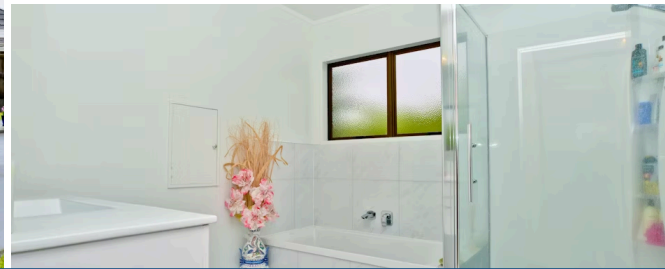




Sold



## 17 Prinnbank Terrace, Dinsdale

Majestically positioned with elevated mountain views, this spacious family home is nestled on a 891m<sup>2</sup> section and located on one of the most desirable and serene streets in Dinsdale. Step inside this 2 storey home to find four double bedrooms, all conveniently situated on the upper level with a newly renovated bathroom and separate toilet on each floor. An additional room with ample wardrobe storage is located on the ground floor which could easily double as a fifth bedroom or office space. Completing the package there are also two generous size living/entertaining areas which enjoy all-day sun as well as a double internal access garage and laundry. This property is a rare gem with the potential to add your own personal touch. A must view with limitless options and room to accommodate the whole family.

 4
  2
  2
 

Land area	891 m <sup>2</sup>
Rateable value	\$610,000
Rates	\$3,356.79

