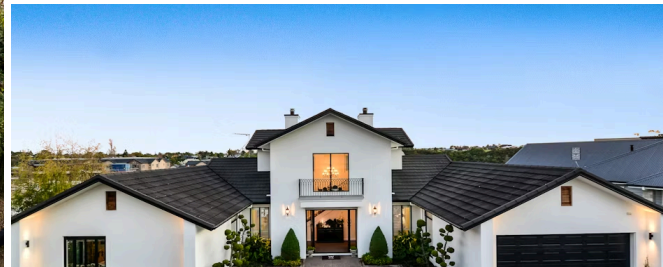




## 7 Durham Heights, Flagstaff



4 2 2

With a 280sqm custom-designed format, it is easy for everyone to enjoy their own activities in your beautifully balanced family home full of elegance and refinement. The open plan living environment revolves around your bespoke kitchen and entertaining area opening to a private all-weather alfresco overlooking expansive Featherstone Park bordering Waikato River. The 2.7m stud feel-good interior and landscaped low-upkeep exterior deliver peace, harmony and whispering solitude that you will cherish coming home to. Much love has been poured into creating this unique sanctuary that effortlessly accommodates friends and family in abundance. Your well-designed foodies haven contains European appliances, a scullery, library shelves for culinary references and a smoky mirror splashback that reflects internal and external beauty, including stunning sunsets. In summer, with the doors unfolded, you'll feel as if you're cooking outdoors. The inviting ambience of your separate lounge is enhanced by an opulent fireplace with two-way efficiency and capacity to warm the whole house. As parents, you'll be in heaven in the upper level master retreat gazing over the park. Guests have ensuite accommodation and children are well catered for. Bathrooms are luxurious, fully tiled spaces.

Land area	804 m <sup>2</sup>
Floor size	280 m <sup>2</sup>
Rates	\$5,870.45



### Wei Sen Chow

☎ 07 838 3800  
 📱 027 455 4477  
 ✉ [weisen.chow@lugtons.co.nz](mailto:weisen.chow@lugtons.co.nz)  
 🌐 <https://www.weisenchow.co.nz/>



### Richard Hartles

☎ 07 838 3800  
 📱 027 3693 001  
 ✉ [richard.hartles@lugtons.co.nz](mailto:richard.hartles@lugtons.co.nz)  
 🌐 <https://www.weisenchow.co.nz/>