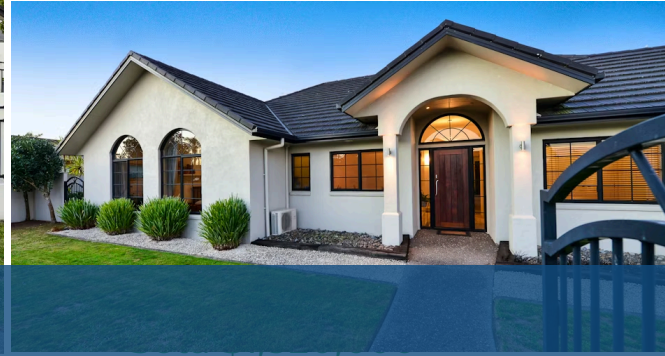




1 The Peninsula, Huntington



Sold



Cleverly designed for seamless indoor-outdoor living, this fabulous family entertainer emanates contemporary elegance. An idyllic ready-made family home in a premier location, the upscale executive dwelling is immediately appealing from the street and equally impressive inside. The solid plaster over brick construction combines with stylish good looks to offer a superior living environment. The highly functional layout features a relaxed free flowing floor plan, with huge integrated living flowing to private outdoor spaces and sparkling in-ground pool. Your family will be well set up for summer. There are choices in living areas and a central kitchen which places the cook in the heart of family life. Well appointed, it features double wall ovens, wine rack, soft close cabinetry, and generous storage and work space. Complementing the three family bedrooms is a private master wing opening to the alfresco. It offers the luxury of a spa bath in the ensuite, walk-in robe, and peaceful retreat away from the main activity hub. A host of extras elevate your living experience, including a home ventilation system, two heat pumps, gas fire, built-in speakers, and gas hot water. Garaging is triple, enhanced by off-street parking.



Land area 771 m²
Rates \$4,948.30



Jono Ng

☎ 07 853 0013

📱 021 231 3031

✉ jono.ng@lugtons.co.nz



Aman Sadhra

☎ 07 853 0013

📱 021 192 2356

✉ aman.sadhra@lugtons.co.nz