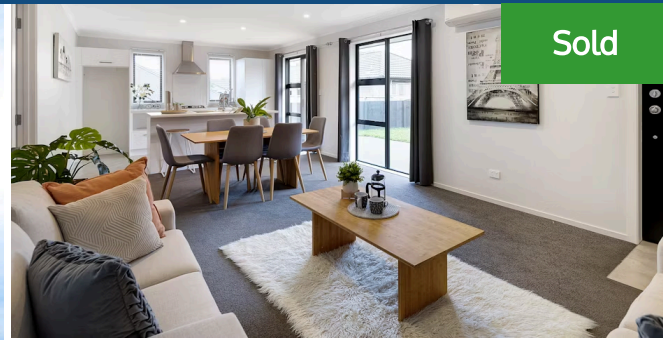
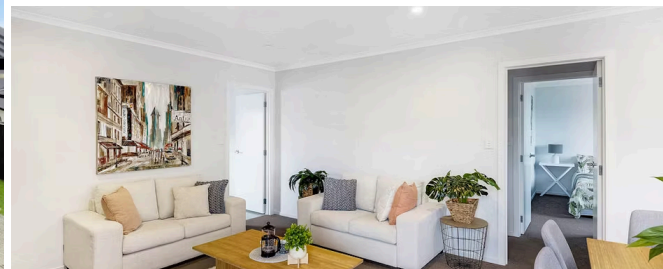




📍 78 Sylvester Crescent, Flagstaff



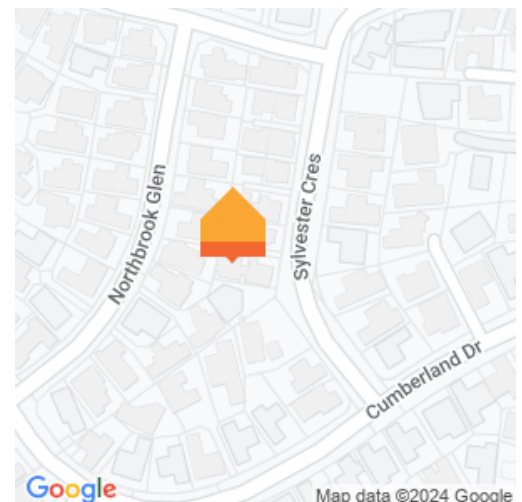
Sold



3 Bedrooms 1 Car 2 Bathrooms

Crafted for effortless living, your low maintenance Flagstaff home promises modern warmth and comfort. Built in 2018, it is well-presented, infused with latest features and is the perfect starter home for your family. It will also appeal to busy professionals and lock-up-and-leave life stylers seeking a peace-of-mind property. Brick construction and double-glazing ease the burden of upkeep and the manageable section requires minimal work, giving your family more time to enjoy life. Simplicity and function are at the heart of the single-level design. Interplay between internal and external spaces makes indoor-outdoor life relaxed and sociable. Your borderless, multi-functional living domain forms the hub of the home, providing good useable space for cooking, meals, lounging and family gatherings. Your home comprises three double bedrooms, including a master with an ensuite. Each has generous wardrobe space, and the third bedroom boasts a walk-in. Wet areas sit on tiled floors and the single internal garage houses the laundry. Decor throughout is crisp and contemporary. The section is fenced and has room for the kids to let off steam outdoors. Rototuna Town Centre, Borman Road shops and supermarket, and sought-after schools serve the area and make it popular with families.

Land area	311 m ²
Floor size	108 m ²
Rates	\$3,536.02



Richard Hartles

📞 07 838 3800
 📱 027 3693 001
 ✉️ richard.hartles@lugtons.co.nz
 🌐 <https://www.weisenchow.co.nz/>



Hugo Hartles

📞 07 838 3800
 📱 020 4076 0475
 ✉️ hugo.hartles@lugtons.co.nz