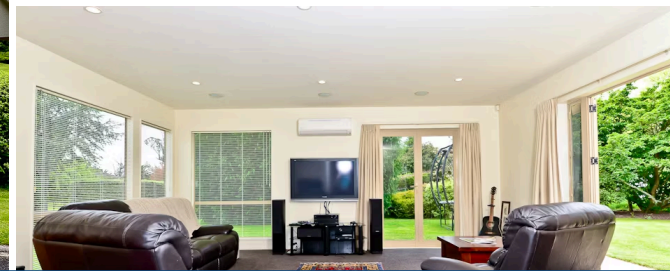


Sold



9 Cloverfield Lane, Horsham Downs



A sweeping drive leads you through established grounds to this privately positioned country property. Designed with flair, this home has many unique features and instant appeal. Situated in a demand location, meticulously maintained, this 251m² home provides plenty of space to relax. The front door opens to a light filled entrance with feature windows and varying stud height. The spacious formal lounge with wall mounted TV and surround sound opens to tranquil and private outdoor living. The kitchen is well appointed and engages easily with the outdoor alfresco dining. There have been recent improvements including new one-run carpet and laminate flooring. There are four double bedrooms, including the master suite, 2.5 bathrooms and an office. The master suite and office are located upstairs; this autonomous area is perfect for parents to retreat to. Feature windows allow plenty of natural light through whilst giving a sweeping view of the land and gardens. The landscaped grounds boast beautiful specimen trees, conifers and shrubs. Set on 1.0127ha, (approximately 2.5 acres) there are 8 perfectly set up paddocks with water, ideal for various stock rearing and stock rotation. Nestled in a sought River Road north locality, Cloverfield Lane is a short commute to Rototuna, Westfield and the Base Shopping Centres. The property enjoys use and owns a share of the communal tennis court. Strategically positioned for Auckland commuters and zoned for Horsham Downs Full Primary and Rototuna Junior High School. This home is the perfect choice for those who cherish taking time out, relaxing with family and friends and enjoying your serene surroundings. "Seldom do properties come to the market in this tightly held locale, viewing essential."

Land area	1.0127 m ²
Floor size	251 m ²
Rates	\$3,000.00

