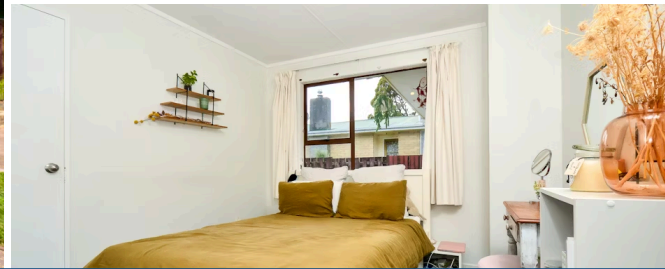




Sold



## 24 Sapphire Place, Chartwell

If you are in the market for a first home or investment, 24 Sapphire Place ticks all the boxes. This property is situated in a handy location and boasts a fully fenced 605sqm freehold section, three bedrooms, one brand new bathroom, and a double garage. It has been freshly painted inside and out, and features a new a heat pump and ventilation system recently installed for year-round comfort, as well as a security camera system for added peace of mind. Infinity gas has been installed and the home is ready for you to move in and enjoy. With a north facing indoor outdoor flow from the living room, this property will suit a budding family. Enjoy the convenience of being within walking distance of all levels of schooling, as well as Chartwell Shopping Centre, nearby parks and a short commute to the CBD and the Wairere Ring Road. Like a true gem, this is a rare find, so don't delay - call Sam now on 020 4038 1998 to book in a viewing.

Land area	605 m <sup>2</sup>
Floor size	135 m <sup>2</sup>
Rates	\$2,637.00



Sam Taylor

☎ 07 853 0013

📞 020 403 81998

✉ sam.taylor@lugtons.co.nz