



5 Windermere Rise, Rototuna

Swimming in space and light, this 290sqm executive residence strikes the perfect balance of private personal sanctuaries and social spaces. Five bedrooms cater to a large family while two living areas and a superbly appointed outdoor leisure precinct speak to consummate entertainers. It's not hard to imagine summer days dining under the covered alfresco and partying into the evening with everyone gathered around the built-in fire, outdoor TV and salt water pool. Supported by a well-appointed kitchen that offers optimum functionality, the open-plan domain is made for effortless entertaining. Occupants can sit back and admire the elevated views over the cul-de-sac or throw open the bi-folds and laze outdoors. The home's thoughtfully considered layout is multi-level and arranged to blend with the section contour and outlook. Sun is a constant companion and the ambience is one of warm relaxation. Heat pumps, underfloor heating, a gas fire and natural solar gain wrap everyone in cosy comfort. There is double internal access garaging and ample driveway parking. The 772sqm section is beautifully groomed and the neighbourhood is family-friendly. Rototuna shops, schools and parks are nearby for lifestyle convenience. Commuters can quickly access transit routes. To download the property files please copy and paste the link into your browser: <http://www.propertyfiles.co.nz/property/5windermererise>

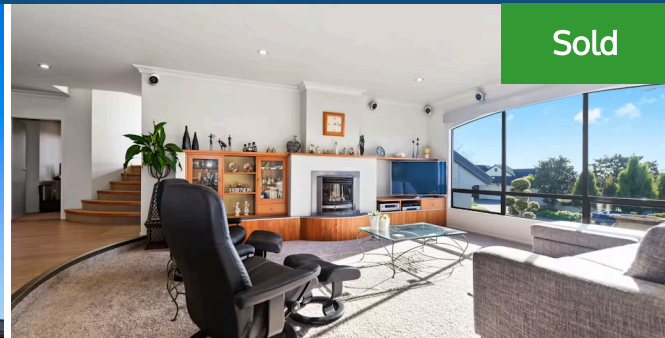


Jamie Barakat

📞 07 853 0013

📱 0274 285 426

✉️ jamie.barakat@lugtons.co.nz



Sold



Land area	773 m ²
Floor size	288 m ²
Rateable value	\$960,000
Rates	\$5,007.00

