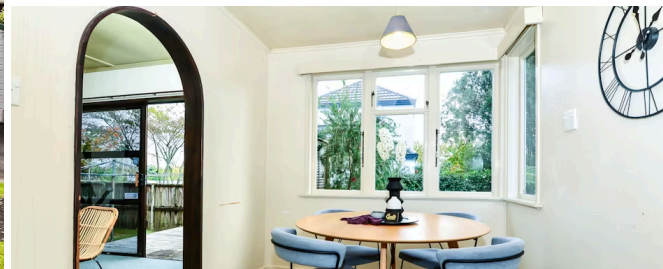




Sold



1 Moule Place, Fairfield

This tidy 1950s home is a popular pocket of Fairfield is vacant and ready for immediate possession. Situated on a freehold corner site in a small quiet cul-de-sac off Casey Avenue, with 3 bedrooms that are very generous in size, spacious separate living that opens to a deck and private backyard that caters to your family needs. There is the convenience of double garage, and great Fairfield location close to Woodstock School and Ranfurly Park. From the CBD to Heaphy Terrace shops and Five Cross Roads, everything is in easy reach, and you certainly don't have to go far to enjoy River walks or the local cafe'. Get in touch with Rebekah today to book your viewing - 022 361 9879

Land area	450 m ²
Floor size	102 m ²
Rates	\$2,812.00

