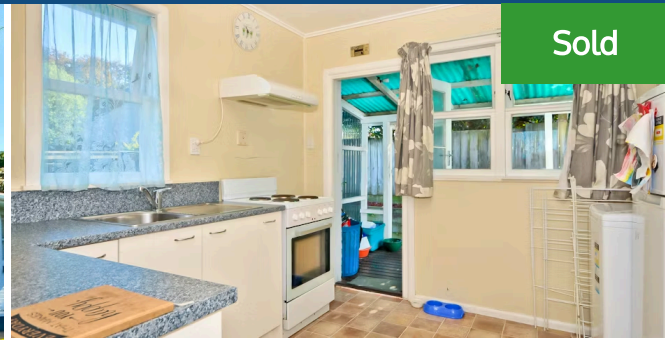




📍 3/90 Mahoe Street, Melville



Sold



Are you still looking for a smart buy near the Waikato Hospital? The key here is not only the location. . . its really the wonderful outlook/views. Save time getting to work. Discover living so close to bus stops, schools, shops and parks - leave your car at home. This area is proven as being popular for those wanting to live close to the Hospital, or anyone looking for a reliable rental investment. The current tenant is happy here, and happy to stay (returning \$290 per week). This is new to the market, they are rare to find, and getting access to view is easy. Arrange your private viewing today. . . You'll be glad you did. Call Lisa Sigley 021722281. www.lugtonslisa.co.nz

Floor size

65 m²

Rateable value

\$245,000



Lisa Sigley

📞 07 838 3800

📱 021 722 281

✉ lisa.sigley@lugtons.co.nz

🌐 <https://www.lisasigley.com/>

