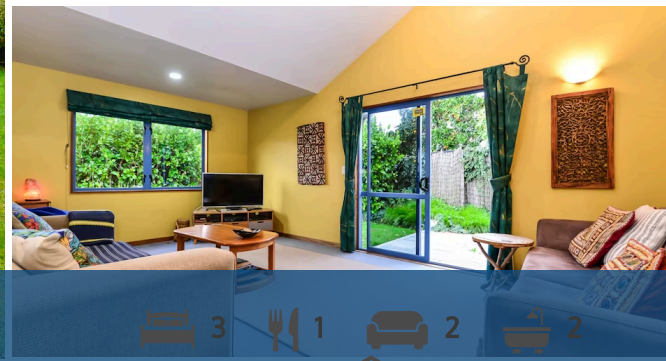




Sold



32A Wymer Terrace, Chartwell

3 bedrooms, 1 bathroom, 2 cars, 2 bathrooms



Conveniently situated on the doorstep of every amenity you could ever need, 32a Wymer Terrace's position on a rear section provides shelter from the hustle and bustle of modern life. Inside, three bedrooms are complemented by two bathrooms (including an ensuite off the master) and a well-appointed modern kitchen. The open-plan living areas offer plenty of versatility; central heating guarantees year-round contentment, and excellent indoor/outdoor flow promotes easy access outside. Afforded a sense of peace and tranquility by its position on a back section, the property boasts a double garage and an easy-care garden. The icing on the cake is the location, with the river just a quick stroll away and a host of cafes, parks and Chartwell Shopping Mall all within close proximity. Currently tenanted and presented to the market by vendors who are determined to achieve a result, this superbly positioned property represents a wonderful opportunity to establish a presence in an ever-popular part of town. Prospective purchasers are advised to contact me today for further details.

Land area	565 m ²
Floor size	190 m ²
Rates	\$3,192.44



Heather Whyte

☎ 07 855 0550

📱 027 239 2751

✉ heather.whyte@lugtons.co.nz

