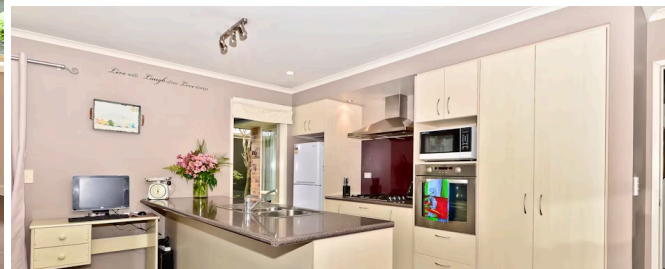




Sold

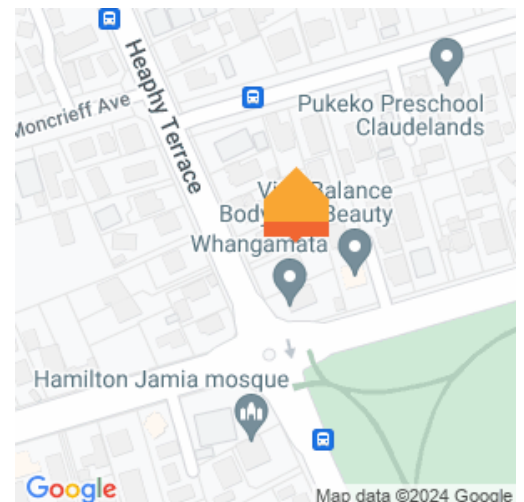


932A Heaphy Terrace, Fairfield



Welcome to 932a Heaphy Terrace - yes it's right in the heart of it all. Brick - yes. Built in 2006 - Brilliant. Freehold section - absolutely. Gas heating/cooking/hotwater - Easy. You'll be living so close to the Claudelands Arena that walking to venues will be a breeze. City restaurants, local cafe's, the local vegie shop, Sunday Markets, Bush walks, River walks, quick access to the expressway. . . these are just a few things that make your new lifestyle the very best. With one careful lady owner, you'll understand why it feels "almost brand new". . . by the way, the carpet is brand new. I love the pretty French gardens. . . making the picture from your lounge all the better. Drive on up, and the automatic opening garage doors will see you securely inside - so you'll feel safe and sound. It really is all here, and they are hard to find - your brick modern townhouse on a freehold section in such great condition. Make sure you don't delay - get on the phone and call Lisa Sigley on 021722281 today. Maybe Xmas could be here. . .

Land area	497 m ²
Rateable value	\$450,000
Rates	\$2,120.00



Lisa Sigley

07 838 3800

021 722 281

lisa.sigley@lugtons.co.nz

<https://www.lisasigley.com/>