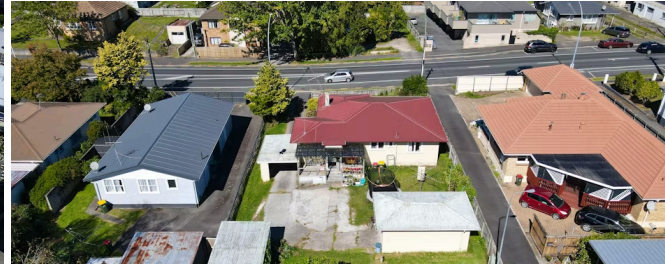




Sold



99 Clyde Street, Hamilton East

Keen eyes will be quick to see what this strategically positioned property has to offer in terms of development or landbanking. Set on 782sqm of prime Hamilton East realty, the section is zoned residential high density and can possibly accommodate two duplexes (four dwellings) plus an area for access to the rear dwelling. The minimum area for each duplex, or townhouse, is 300sqm, with the allocation of 150sqm of land exclusively to each unit. If opting for apartments, potential exists for five dwellings based on the average density of 150sqm per apartment, or possibly six, depending on design. As the purpose of the Residential Intensification zone is for apartments and townhouses. Location is king when it comes to successful housing developments. This property eases off a minor arterial road that links to State Highway 1 for effortless commuting. The University of Waikato is walking distance and Hamilton Boys' High lies in zone. Waikato Innovation Park, the Ruakura Superhub and the CBD are close, and the neighborhood is well supported by shops, amenities, parks, and public transport. The future certainly looks bright here. For more information please call David on 0211212196



Land area

782 m²

Rateable value

540000

