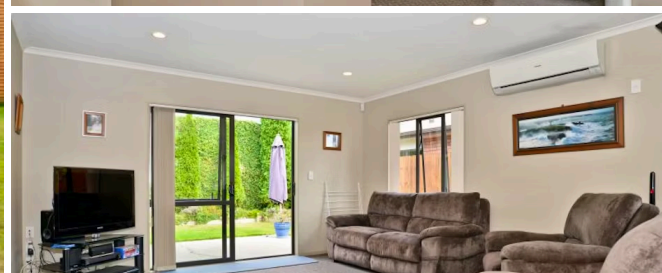




Sold



13 Shrle Place, Huntington

2 bedrooms, 1 bathroom, 1 car

A property that catches your eye! Built in 2007 the property has been extremely well looked after by the current owner. Offering 2 generous bedrooms, a heatpump that's placed strategically to warm the whole home and for those rainy days a single internal access garage with an automatic door opener, the back garden is easily accessed through the ranch slider. An easy stroll to restaurants, cafes and the Rototuna shopping complex makes this property a must view. Give John a call to arrange your private viewing

Land area 332 m²
Rates \$2,183.90

