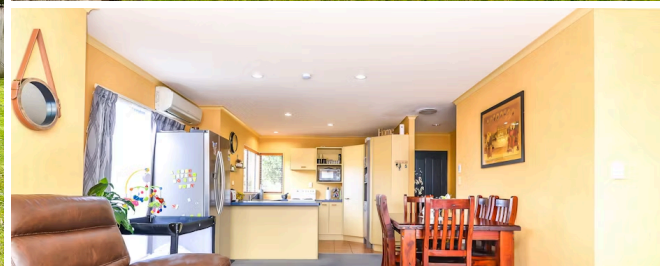




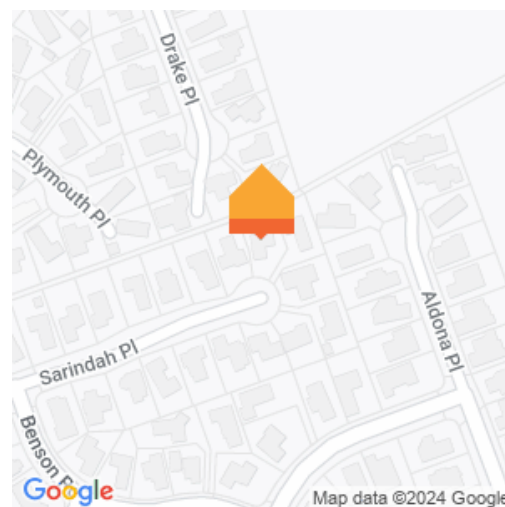
Sold



## 29 Sarindah Place, Fairview Downs

Positioned at the cul-de-sac end of a leafy street in a favoured pocket of Fairview Downs, this home comes to market as a tidy family-friendly package in a quiet central location. The area enjoys increasing popularity for its lifestyle convenience and the vibrant development of its commercial and residential sectors which add value to the suburb. The home's well-presented interiors deliver spacious open plan living, three bedrooms, a family bathroom and an internal access double garage where the laundry is also housed. The warm socially-positioned kitchen has all the desired accoutrements including double dishwash drawers and two pantries. North-facing living flows outdoors to a sunny courtyard, ideal for relaxed summer barbecues. The fully fenced backyard provides a secure environment for children and pets. There is a garden shed and fruit trees. The front yard is newly landscaped and has a pleasant street profile. DVS creates dry healthy interiors and two of the bedrooms benefit from the north sun. Raymond Park is footsteps away for playground entertainment and sports, and the local shops and community kindy on Powells Road are walking distance. Ruakura industries, Five Cross Roads, Hamilton East, the University of Waikato and CBD are all in easy reach and very commutable due to the close proximity to Wairere Expressway. Both city and intercity commuting are an effortless undertaking from Fairview Downs. The area has good public transport. New Greenhill Park precinct, with its growing offer of retail, urban services and eateries, is a 10-15 minute walk. And with future growth in the area looking strong, investing in Fairview Downs is a smart move.

Land area	707 m <sup>2</sup>
Floor size	140 m <sup>2</sup>
Rates	\$2,660.00



Kerry Hopper

☎ 07 838 5870

📱 021 984 173

✉ [kerry.hopper@lugtons.co.nz](mailto:kerry.hopper@lugtons.co.nz)

🌐 <http://kerryhopper.nz/>