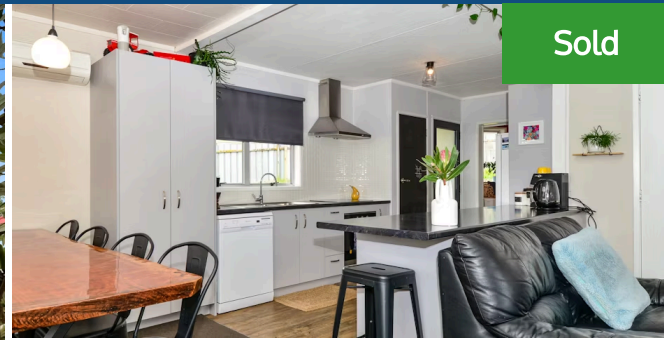


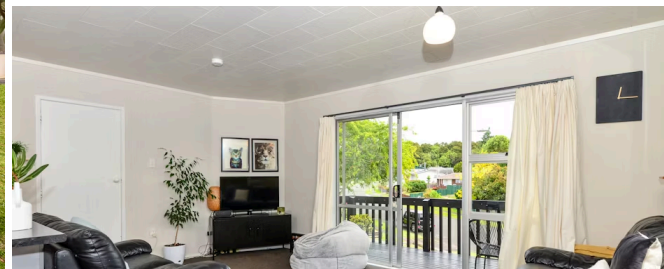


7 Culverdon Street, Dinsdale

Welcome to 7 Culverdon Street in ever popular neighbourhood of Dinsdale. This weatherboard home stands tall and offers plenty, 3 generous bedrooms, a wow kitchen, dishwasher, heat-pump, open plan living area with pleasant views, basement single garage and loads of under house storage. Handy to Bremworth park, Dinsdale shops and is zoned for Aberdeen Primary school. The current vendors have enjoyed the home and the peace and quiet of living in a cul de sac but its time to move to their next adventure



Sold



3 bedrooms 1 car 1 bathroom

Land area	614 m ²
Floor size	87 m ²
Rates	\$2,745.00

