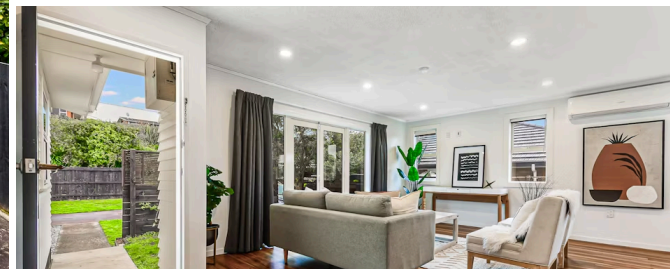




Sold



84 Newcastle Road, Dinsdale

Transformed for 21st century living, this 1960s house maintains its original character while catering for modern family life. The home has been made more liveable and energy efficient through double glazing, insulation, heat pumps, gas infinity hot water, and some LED lighting. Only the bathroom and garage are single glazed, and insulation mostly covers the top and bottom of the house. Crisp, contemporary decor and lustrous timber floors give the open plan zone aesthetic impact. A ranchslider takes living and entertaining outside and the bench outside the kitchen has obvious benefits when dining alfresco. Four good sized and well-appointed bedrooms give a big shout out to a family. Light floods into the spacious master made ambient all-year round thanks to a heat pump. Wooden floors grace the family bathroom and separate toilet, and attention has been given to enhancing the laundry and making it a walk-through to the single, automated internal access garage. Additional parking comes in the form of a carport and big front yard. The powered and lockable cabin is ideal for an office, studio, or hobbies room. Encompassing 991sqm of land, the family-friendly section has ample room for kids to play. Vegetable gardens are raised, and a greenhouse is great for plant propagation. A variety of fruit trees, citrus and berries provide healthy harvests. The quiet, private backyard is gated, fenced, and has vehicle access. The section itself is very accessible thanks to a double entrance and u-shaped driveway. Shops and main arterial networks are handy and Aberdeen School zoning will resonate with families. Call Melissa Wilton for further information or to view on 021 157 3459. To download the property files please copy and paste the below link into your browser:



Land area	991 m ²
Floor size	170 m ²
Rateable value	\$880,000
Rates	\$3,436.00



<https://www.propertyfiles.co.nz/762120003>



Melissa Wilton

☎ 07 853 0013

📱 021 157 3459

✉ melissa.wilton@lugtons.co.nz