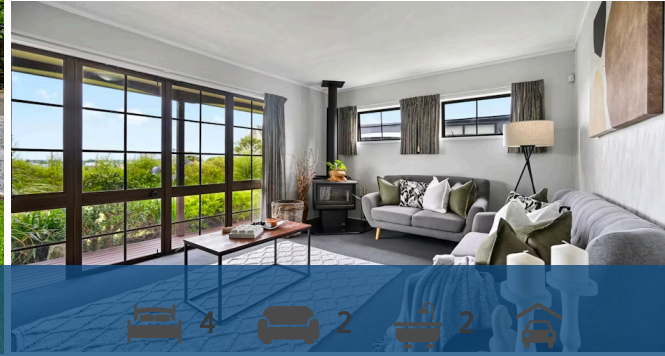


Sold

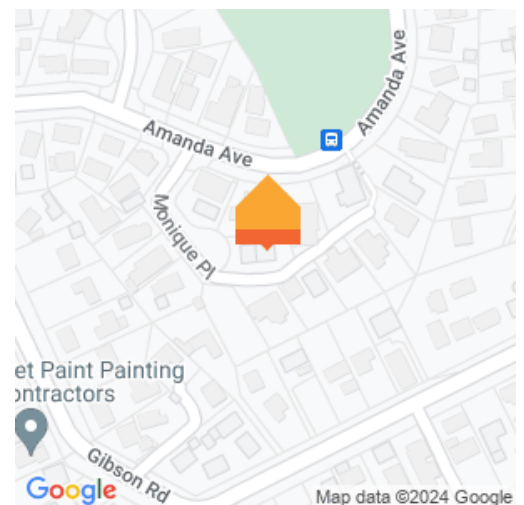


5 Monique Place, Dinsdale

Nestled in a quiet and family friendly cul-de-sac, this spacious 220sqm (approx.) residence presents an exceptional opportunity for a family looking for space and versatility. Enjoy the convenience of being in close proximity to the recently revitalized Bremworth Park and Dinsdale Shopping facilities. The lower level of this home features a welcoming lounge with a cozy fireplace that opens to the front veranda. Generously sized kitchen and dining area is equipped a dishwasher, ample cupboard space and a new wall oven and cooktop, extending to the sunroom and outdoor BBQ area. Two bedrooms and an office are placed on the ground floor, complemented by an updated bathroom and a separate toilet. Upstairs you'll discover the master retreat, complete with a heat pump and an ensuite, a second living area, and a fourth bedroom. The residence is further enhanced by ample parking options, including a double garage and plenty of off-street parking. Impeccably maintained grounds and gardens surround the property, featuring vegetable boxes and meticulously trimmed lawns that offer beautiful, elevated views across the district. To download the property files please copy and paste the below link into your browser:

<https://www.propertyfiles.co.nz/property/5monique>

Land area	806 m ²
Floor size	224 m ²
Rateable value	\$975,000
Rates	\$3,872.00



Jamie Barakat

☎ 07 853 0013

📱 0274 285 426

✉ jamie.barakat@lugtons.co.nz