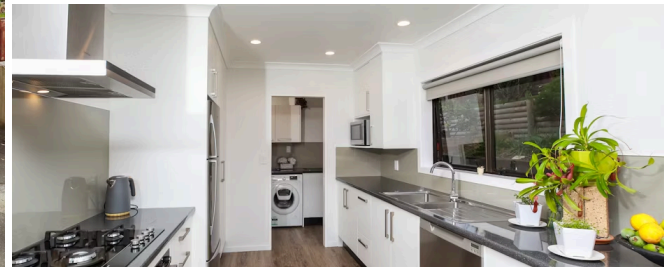




📍 60 Hazelwood Avenue, Dinsdale



Sold



4 bedrooms 1 carport 2 bathrooms

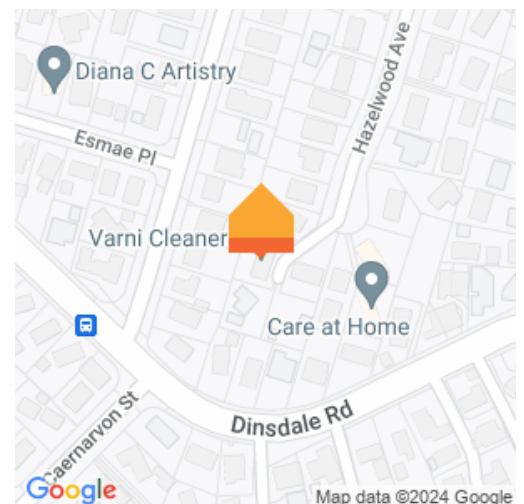
Perched at the top end of a central Dinsdale cul-de-sac, built in brick and packing in the wish list ticks. Your living is large and your sleek modern kitchen, family bathroom and laundry are all only two years new, as is the living room flooring. The kitchen is really showing off with gas hob, a 900mm oven, double dish-drawers and great bench space and both the dining and lounge areas open onto a wrap-around deck for effortless indoor-outdoor living and entertaining. Heating is your choice of a heat pump and gas fire. Four bedrooms consist of the master with ensuite and deck access, two more double rooms and a single. The home sits on internal access basement garaging with storage and forecourt parking - no wet groceries here! The home is neatly landscaped and terraced over the generous 781sqm section with thoughtful additions like mowing strips, veggie boxes and established planting. The family-friendly area is in easy reach of Dinsdale shopping centre and main arterials and it's just a short walk to Aberdeen School.

Land area

781 m²

Rates

\$3,035.02



Rebekah Bloodworth

📞 07 855 0550

📱 022 361 9879

✉️ rebekah.bloodworth@lugtons.co.nz