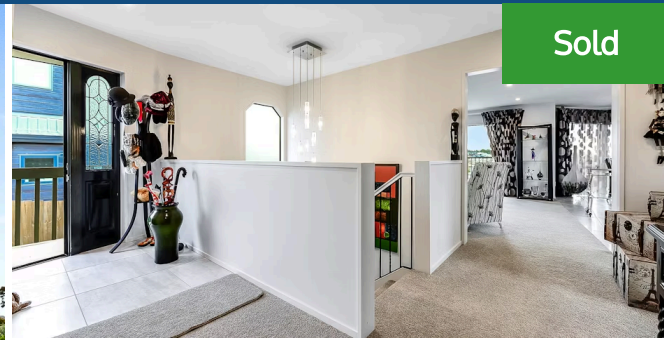




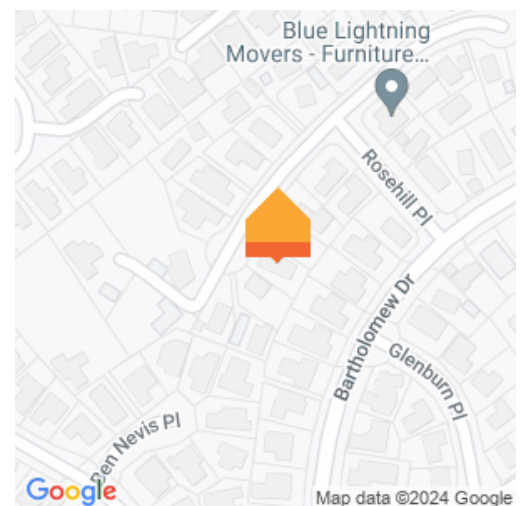
11 Rosehill Place, Nawton



Full of appeal, this property combines an immaculate kerbside profile with a stylish modern interior. Beautifully presented, the whole package shouts 'wow' right down to the cul-de-sac location and elevated district views. A stained-glass door opens to a tiled entrance leading to the large, open-plan domain with ranchslider access onto the front deck. A family is afforded good freedom of movement and plenty of space to relax and entertain. The light, bright kitchen has loads of cupboards, a five-burner gas hob and big oven, ideal for catering for big gatherings. Accommodation comprises four double bedrooms. The substantial master is an inviting retreat featuring a large fitted walk-in wardrobe, an ensuite with a fully tiled shower, and a bay window for the outlook. One bedroom accesses the deck. A spa bath and large tiled shower add luxury to the family bathroom. The powder room is separate. Tiling in key areas gives a sleek look and easy-care benefits. The streamlined laundry has both a tiled floor and a tiled splashback. The level of storage throughout is truly impressive. Window treatments draw the eye and gas infinity hot water and a heat pump offer good creature comfort. There is workshop space in the newly carpeted double internal access garage, fitted with two independently operated automated doors. An expansive rear deck beckons for alfresco living and the fully fenced section has ample room for kids and pets to roam, a flat backyard and a garden shed. The house, which had exterior paintwork completed in 2015/16, shows pride of ownership and will suit a family long into the future. Call Melissa Wilton for further information or to view on 021 157 3459. To download the property files please copy and paste the below link into your browser:

 4
  1
  2
 

Land area	659 m ²
Floor size	227 m ²
Rateable value	\$870,000
Rates	\$3,382.00



<https://www.propertyfiles.co.nz/property/765460003>



Melissa Wilton

📞 07 853 0013

📱 021 157 3459

✉️ melissa.wilton@lugtons.co.nz